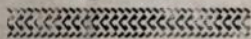


February 21, 2016

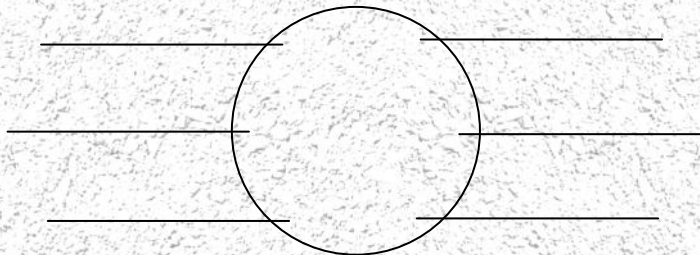
# GOD IS FOR US



Genesis 4



"God Is For Us"  
Genesis 4



God said to Cain, "If you do what is \_\_\_\_\_, will you not be \_\_\_\_\_?"

God gave a \_\_\_\_\_ to Cain because of his sin, but then allowed him to live on and live a "normal" life.

One of the characters of God that we see over and over up to this point in Genesis is that God \_\_\_\_\_.

God is for us. Not was, or will be or might be but \_\_\_\_\_.

Even when we are \_\_\_\_\_ God, he is for us.

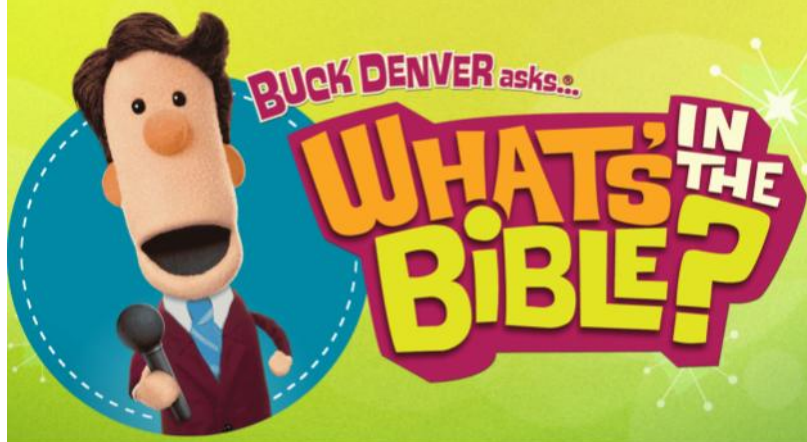
God is so much for us that he is \_\_\_\_\_.

May we come to know and believe that God is For us

# LIFELINE (Family Worship)

MARCH 6th

9am - Discovery Zone



Camp Schedules  
Now Available

Discovery Zone | Connecting Point

PURSUIT  
LUKE 19:10



**TODAY      Big Band Playing**

6:00 p.m.    Student LifeGroups  
              Women's Bible Study - *"To Live is Christ"*

**MONDAY, February 22**

9:15 a.m.    Rev Strength Class  
6:15 p.m.    Praise Ringers Rehearsal  
7:30 p.m.    Adult Basketball

**TUESDAY, February 23**

5:00 p.m.    Step Aerobics  
6:30 p.m.    Rev Fit

**WEDNESDAY, February 24**

9:15 a.m.    Rev Strength Class  
6:30 p.m.    Student Ministry Unite  
              Adult Worship Choir Rehearsal  
              Anderson Christian Martial Arts &  
              Tai Chi for Seniors (55+)

**THURSDAY, February 25**

5:00 p.m.    Step Aerobics  
6:30 p.m.    Rev Fit Class

**SATURDAY, February 27**

9:00 a.m.    Rev Fit Class  
10:00 a.m.   Step Aerobics  
10:30 a.m.   Pee Wee Basketball

**SUNDAY, February 28 - Praise Ringers Playing**

9:00 a.m.    Worship  
              Sunday School  
10:30 a.m.   Worship  
              Sunday School  
6:00 p.m.    Student LifeGroups  
              Women's Bible Study - *"To Live is Christ"*

THIS WEEK

## OTHER ANNOUNCEMENTS

- **Easter Memorial Tulips** may be order through the end of February at Connecting Point or in the church office. Cost is \$10. They will be available to take home following the Easter Service on March 27.
- **New Church Directories:** If your picture appears in our new directory, you are invited to pick up a copy of the directory at Connecting Point in the Atrium anytime Sunday. **Adults Only - One Per Family.**
- **The Ark (Rainbow Christian Camp)** summer camp schedules are available at Connecting Point and the Children's Check-In areas. Register by April 30 to receive a free T-shirt. When registering for camp, don't forget to call the church office for the camp code.
- **Anderson Christian Martial Arts/Tai Chi for Seniors (55+)** has been added to the Anderson Christian Martial Arts classes on Wednesdays in the Fellowship Hall at 6:30 p.m. Cost per session will be \$5. For more info, Contact Clement Riedner, 765.642.0725.
- **Our Children's Department needs you!** We are in need of one lead teacher in Toddler & Tiny Tot Rooms (once per month). We also need a lead teacher in Sonshine Station for first service only, every other month. If you are interested or have questions, please contact Tisha Schultz.



For even more information about Bethany Christian Church and what's going on here, use your smart phone to scan the code, or type in [www.bccanderson.org](http://www.bccanderson.org).